



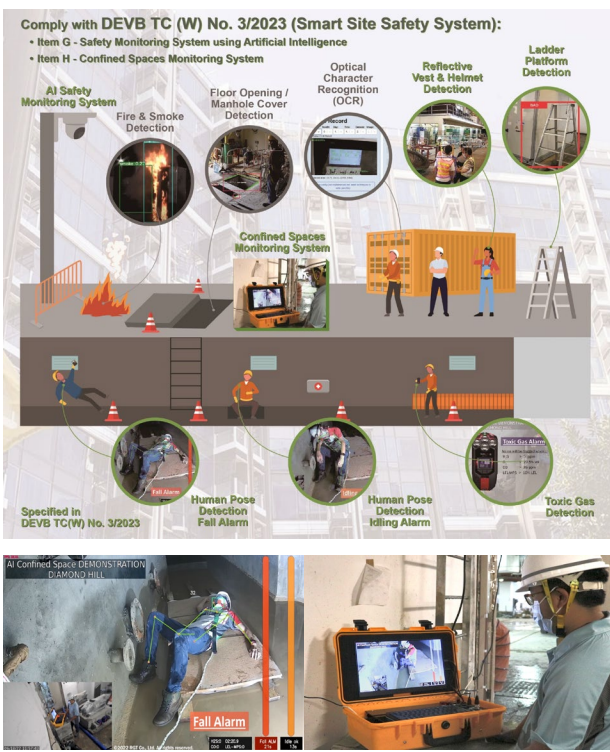
Organised by BEAM Society Limited

Enhancing Safety and Efficiency: Integrating MiMEP and AI Safety Measures



In the CPD, the speaker will talk about the challenges in implementing Multi-trade Integrated MEP (MiMEP) in a construction project for the infrastructure project from the perspective of the E&M contractor. He will also address the need to meet the latest requirements of 4Ss and the adoption of AI smart technologies for monitoring site safety in confined spaces and fire hazard monitoring, as encouraged by the Works Bureau.

The talk will also cover how contractors can leverage AI technologies to enhance site safety by utilizing advanced sensors, and video and image analytics. These technologies enable real-time monitoring and detection of safety risks in confined spaces and facilitate early warning alerts and automated emergency response procedures for fire hazard monitoring.



1.5 CPD hours for BEAM Pro and BEAM Affiliate

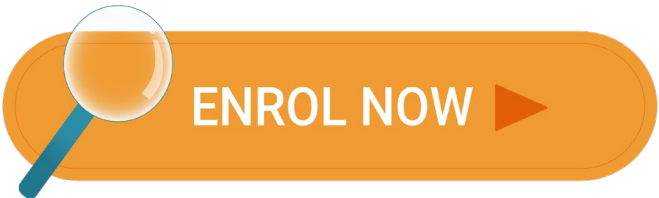
The CPD hours will be automatically uploaded to attendees' BEAM Pro / BEAM Affiliate Individual Account; Certificate of Completion will be issued via email within 1 month after course completion.

**Date:** 23 July 2024 (Tuesday)

**Time:** 3:00pm - 4:30pm

**Format:** Webinar

**Language:** English



Speaker



**Ir Antonio CHAN**  
*Deputy Managing Director,  
 REC Engineering Co., Ltd.*

Supporting Organisations:



- Terms & Condition:
- Registration will be on a first-come-first-served basis.
  - BSL reserves the right to cancel, postpone or reschedule an event due to unforeseen circumstances, e.g. insufficient enrolment.
  - The course will be cancelled when typhoon signal no. 8 above, or black storm warning is hoisted 3 hours before the course.

**Enquiries**  
 Please contact our Marketing and Training Department at +852 3610 5782.

**Contact Us**  
 BEAM Society Limited 1 /F, Jockey Club Environmental Building, 77 Tat Chee Avenue, Kowloon Tong, Hong Kong  
 TEL: +852 3610 5700 | FAX: +852 3996 9108  
 EMAIL: beampro.training@beamsociety.org.hk  
 WEBSITE: www.beamsociety.org.hk

