

[Webinar] Sound Insulation in Residential Buildings – Acoustic Resilient Floor Mat

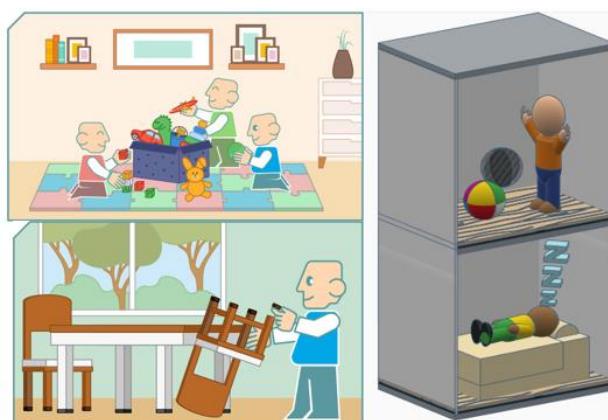


Image Courtesy: EPD

Introduction

Noise from normal day-to-day activities within residential unit, such as noise from television, musical instruments, playing or running, dog barking, furniture moving, chopping food, things dropping on the floor, is inevitable part of everyday life. These occasional noises, if loud enough, will transmit from one unit to another, causing nuisance to neighbouring residents in upper, lower or adjacent units.

The Environmental Protection Department also notes the issue and a review and technical feasibility study is thus commissioned which revealed that appropriate indoor elements will fundamentally help reducing sound transmission between units and hence alleviate most, if not all, of the domestic noise problems.

This seminar will briefly share with you about the study's outcomes, the technical information in designing and applying sound insulation for better indoor sound environment in residential buildings and an associated practice note issued to address such concerns, as well as the relevant credit requirements of HWB 6 under BEAM Plus NB v2.0.

[Online
Registration](#)

CPD Entitlement: **1.5** CPD hours
Language: Cantonese supplemented with English materials
Registration Deadline: 26 September 2023 (Tuesday)

Organiser

BEAM
建築環保評估協會

Enquiry: beampro.training@beamsociety.org.hk

Tel: (852) 3610 5719

2023
Sept
28
(Thursday)

3:30 - 5:00pm
Speakers

Mr Joe LEUNG
*Senior Environmental
Protection Officer*
Environmental Protection
Department

Mr Stephen CHONG
*Environmental Protection
Officer*
Environmental Protection
Department

Ir Irene LEUNG
Project Assessor
BEAM Society Limited

Supporting Organisations:



Terms & Condition:

1. Registration will be on a first-come-first-served basis.
2. BSL reserves the right to cancel, postpone or reschedule an event due to unforeseen circumstances, e.g., insufficient enrolment.
3. The course will be cancelled when typhoon signal no. 8 or above, or black storm warning is hoisted 3 hours before the course.